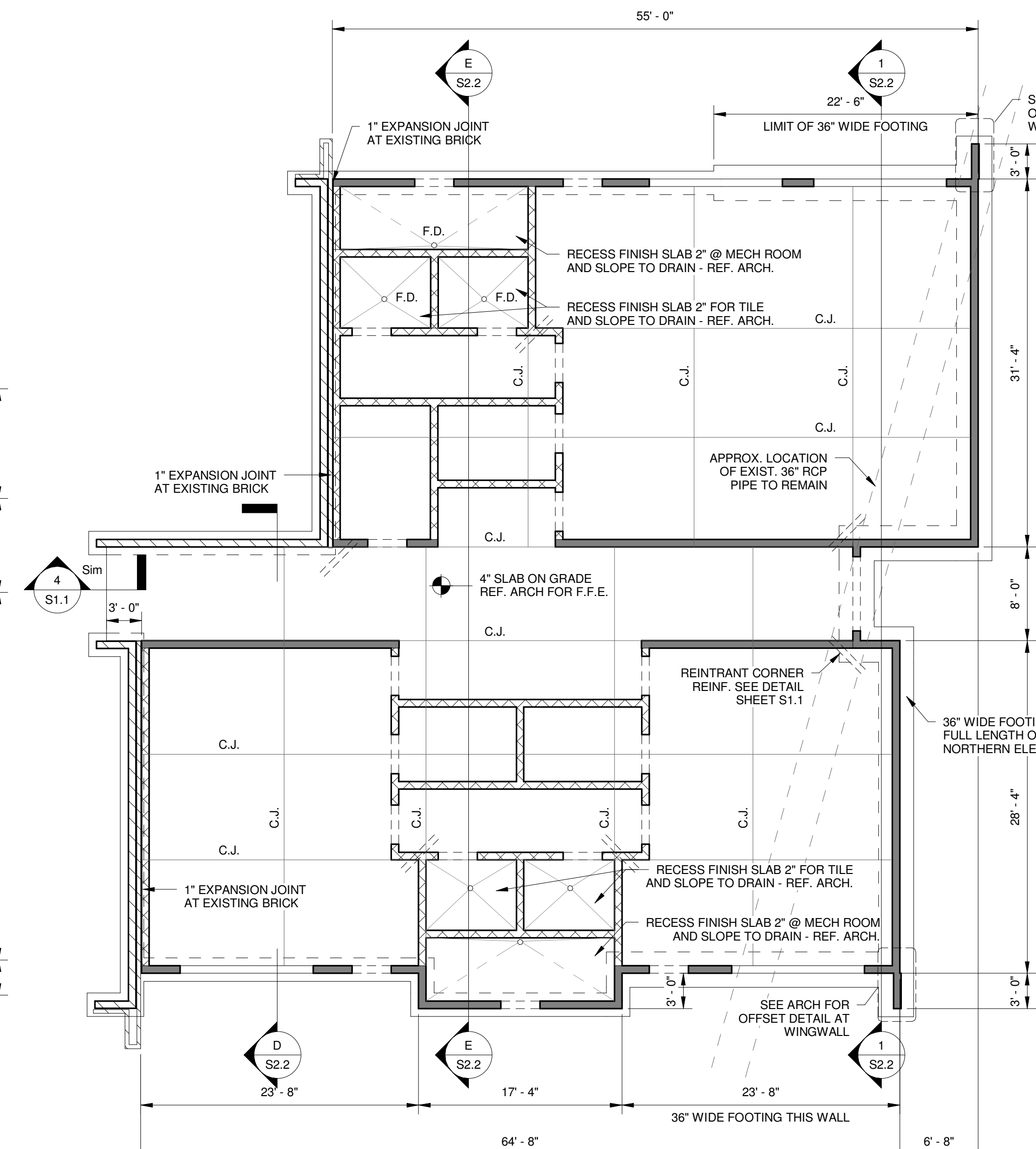


1 SLAB PLAN - WING 3
1/8" = 1'-0"



2 SLAB PLAN - WING 5
1/8" = 1'-0"

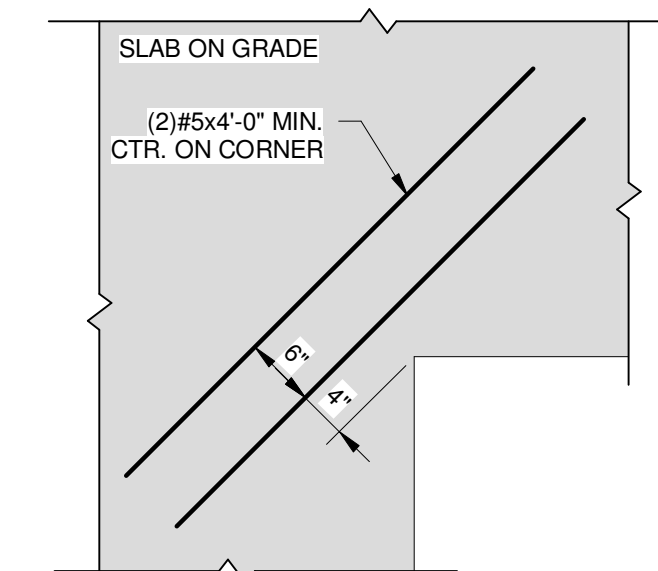
- LEGEND:**
- 8" CMU STRUCTURAL WALL
 - 8" CMU NON-STRUCTURAL WALL
 - EXISTING 8" CMU WALL W/ BRICK VENEER
 - C.J.

 CONTROL JOINT - SEE DETAIL
 - FLOOR DRAIN

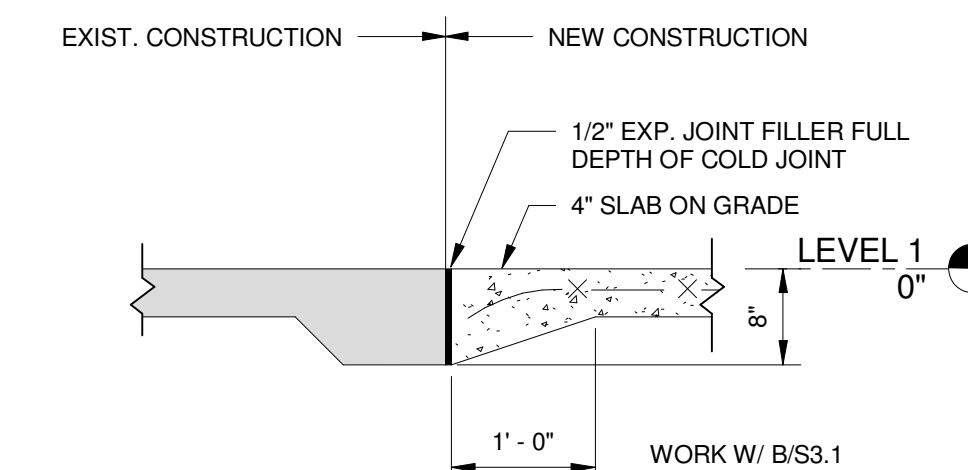
CRAFT & WEBSTER
STRUCTURAL ENGINEERS, INC.
129 Highpoint Dr.
Gulf Breeze, FL 32561
Phone:
(850) 712-8999 RAC
(251) 402-4207 SHW

FOUNDATION/SLAB NOTES:

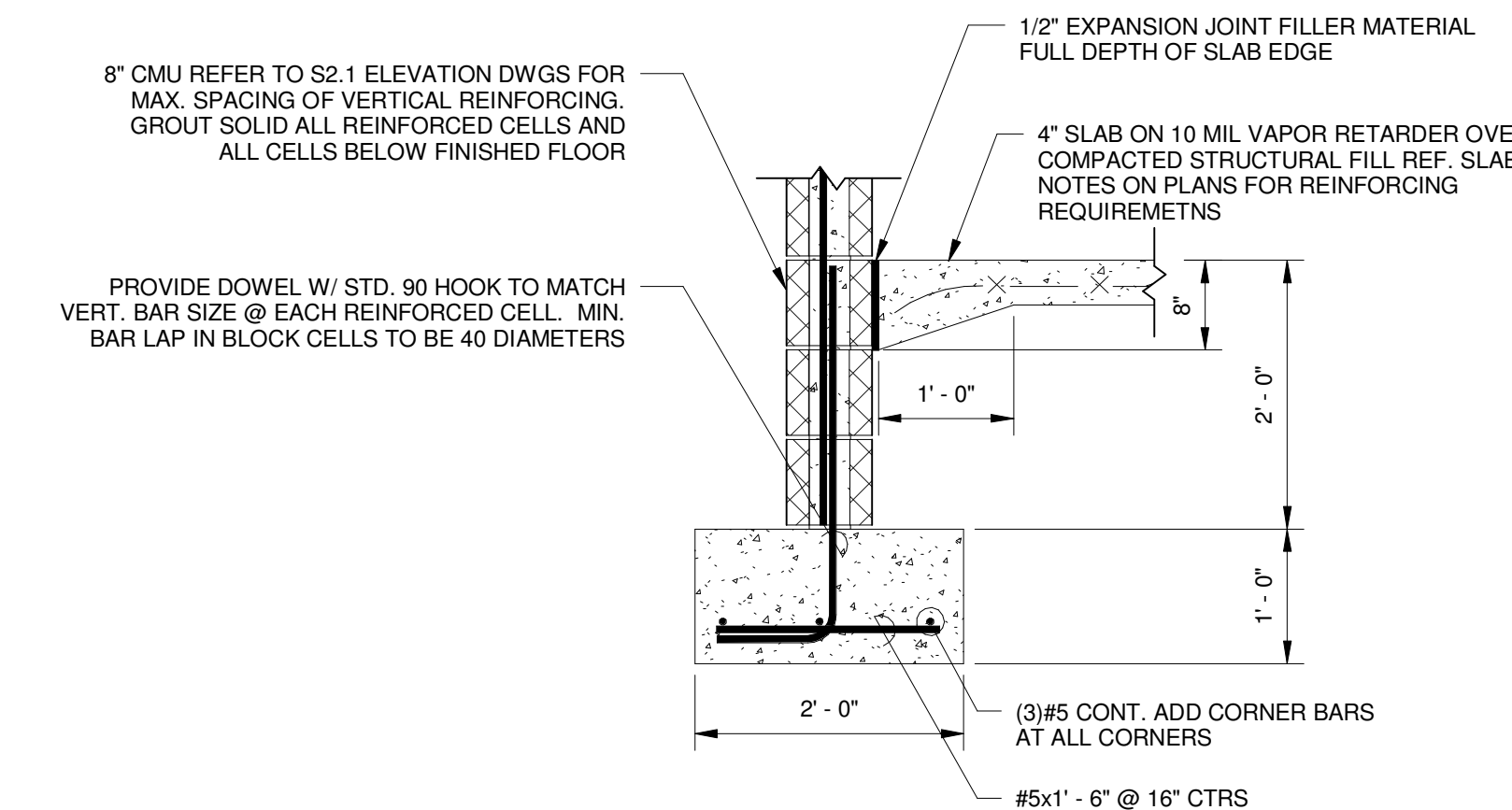
- PLACE CONTINUOUS WALL FOUNDATION AND COLUMN FOOTINGS ON UNDISTURBED SOIL OR COMPACTED STRUCTURAL FILL AS REQUIRED BY SITE CONDITIONS. PREPARE BEARING MATERIALS AS DIRECTED BY THE GEOTECHNICAL REPORT.
- CONCRETE FOR ALL FOUNDATION TO ACHIEVE MINIMUM 28 DAY BREAKING STRENGTH OF 3,000 PSI. SEE SPECIFICATIONS FOR CONCRETE AND REINFORCING REQUIREMENTS. REFER TO PROJECT SOILS REPORT FOR SUB-GRADE PREPERATION REQUIREMENTS.
- FILL ALL CELLS OF 8" CMU WALLS BELOW FINISH FLOOR WITH GROUT. PROVIDE REINFORCING DOWELS AND WALL REINFORCING IN ACCORDANCE WITH SECTIONS AND DETAILS.
- CMU WALL DIMENSIONS PROVIDED THIS SHEET ARE FOR REFERENCE ONLY. CONTRACTOR TO VERIFY ALL SLAB AND WALL DIMENSIONS WITH ARCHITECTURAL PLANS. ARCHITECT TO RESOLVE DIMENSIONAL DISCREPANCIES.
- PROVIDE SAWN CONTROL JOINTS IN ACCORDANCE WITH TYPICAL DETAIL. JOINT SPACING TO BE AS SHOWN AND DIRECTED BY DETAIL NOTE.
- WHERE SLAB ON GRADE ABUTS CMU BEARING BELOW SLAB ELEVATION PROVIDE 1/2" PREMOLED EXPANSION JOINT MATERIAL FULL DEPTH OF SLAB/WALL INTERFACE.
- TYPICAL SLAB ON GRADE CONSTRUCTION TO BE 4" CONC. SLAB 3,000 PSI COMPRESSIVE STRENGTH @ 28 DAYS. PLACE SLAB OVER 10 MIL VAPOR RETARDER ON COMPACTED BASE MATERIAL PREPARED IN ACCORDANCE WITH THE GEOTECHNICAL ENGINEER'S REPORT. REINFORCE SLAB WITH 6x6 W2.9xW2.9 WWF IN FLAT SHEETS SUPPORTED BY CHAIRS SPACED AT MAX. 36" CTRS. TO SUPPORT AND MAINTAIN WWF 2" BELOW TOP OF SLAB DURING CONCRETE PLACEMENT AND FINISHING.
- AT RECESSED SLABS MAINTAIN MINIMUM 4" SLAB THICKNESS.
- PROVIDE (2) #5x4'-0" REINFORCING BAR AT ALL SLAB INTERIOR CORNERS, PENETRATIONS AND SLAB DISCONTINUITIES. REFER TO DETAILS S1.1 FOR REINFORCING REQUIREMENTS.
- COORDINATE PLUMBING ROUGH-INS, ELECTRICAL CONDUIT AND FLOOR DRAIN REQUIREMENTS WITH RESPECTIVE TRADES. COORDINATE FLOOR SLOPE AT FLOOR DRAINS W/ PLUMBING. NOTIFY STRUCTURAL ENGINEER OF ANY SLAB PENETRATION REQUIREMENTS OVER 12" SQUARE AS THESE AREAS MAY REQUIRE ADDITIONAL REINFORCING.



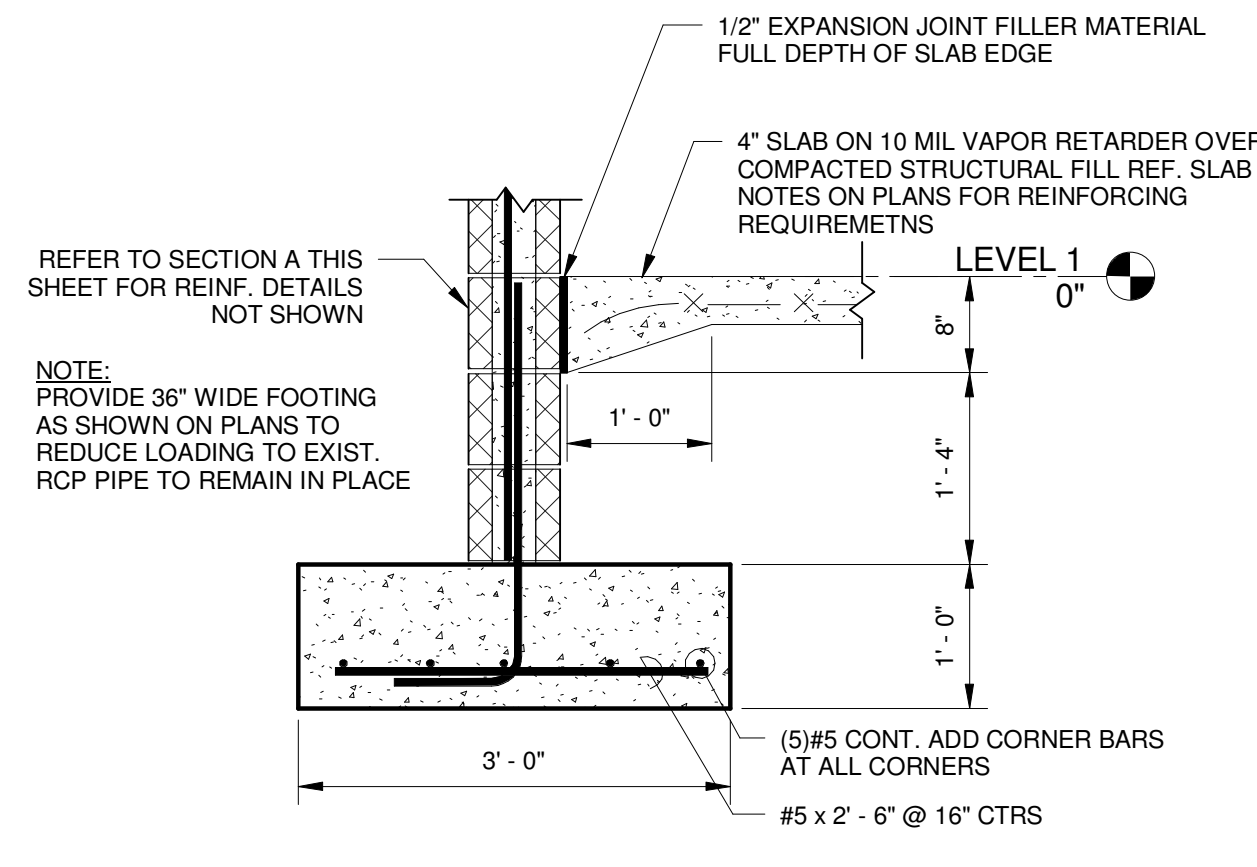
3 TYP. REINTRANT CORNER REINFORCING
3/4" = 1'-0"



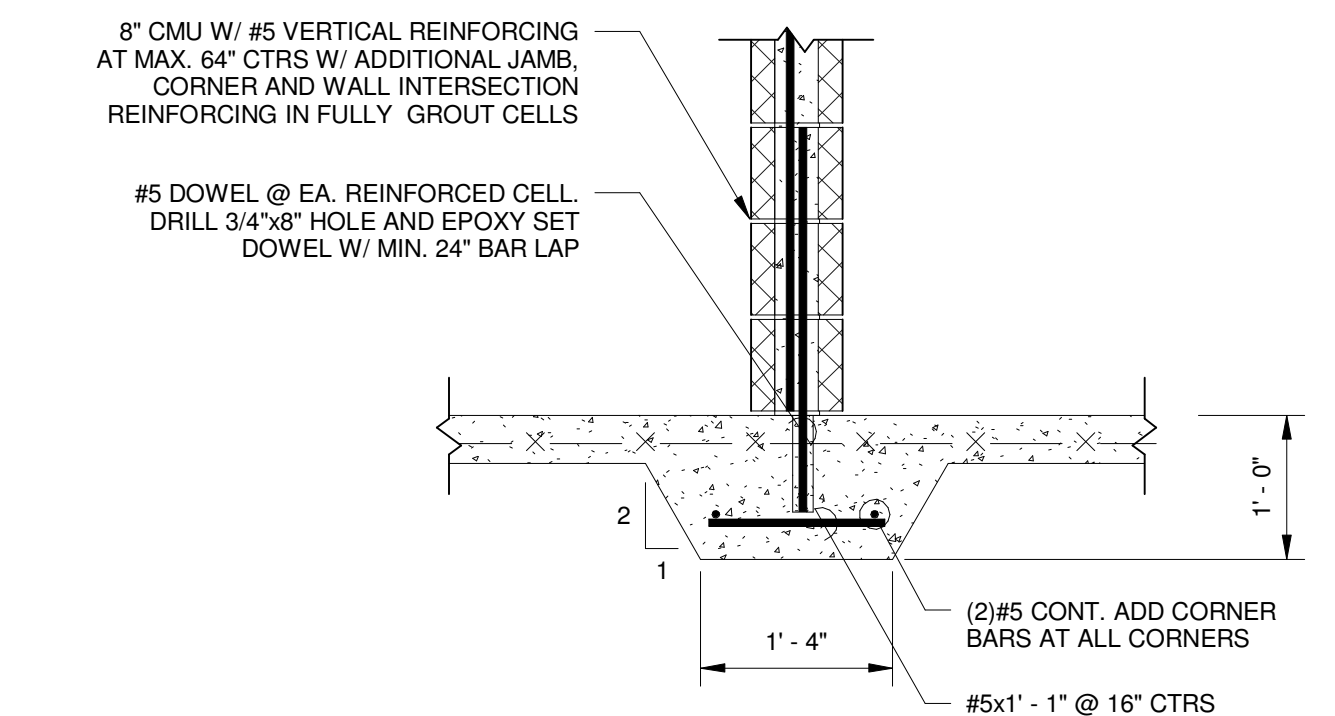
4 SECTION - SLAB TIE
3/4" = 1'-0"



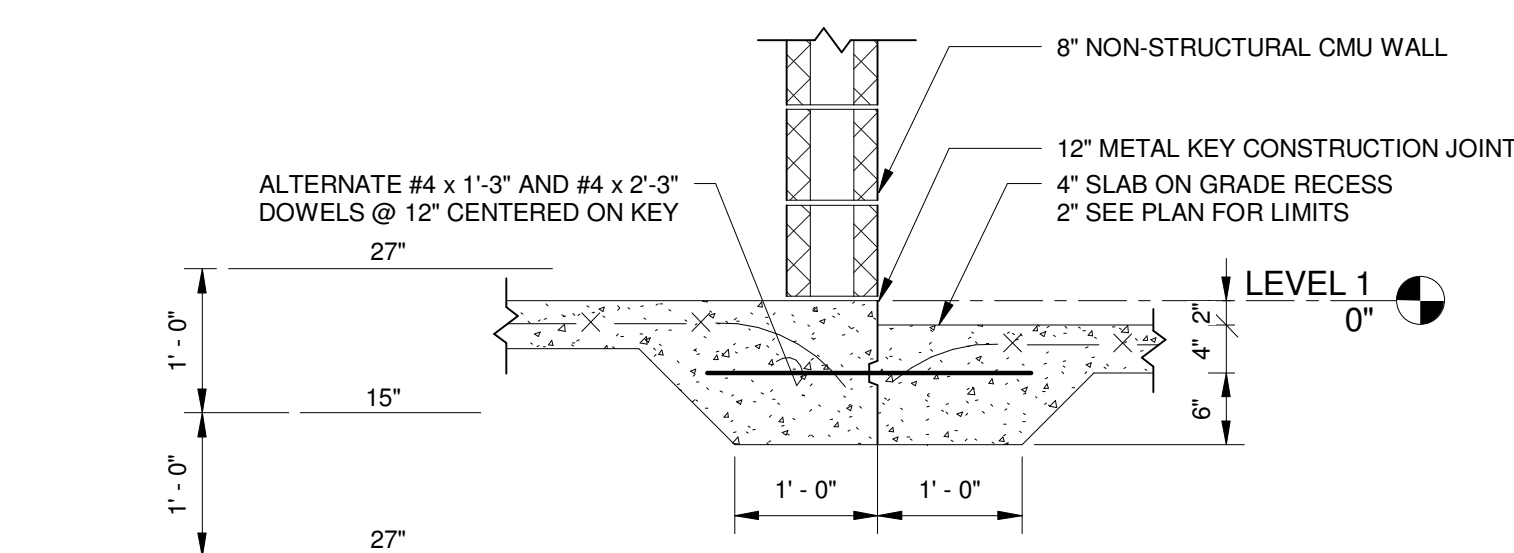
A TYP. EXT. STRUCTURAL WALL FOOTING
3/4" = 1'-0"



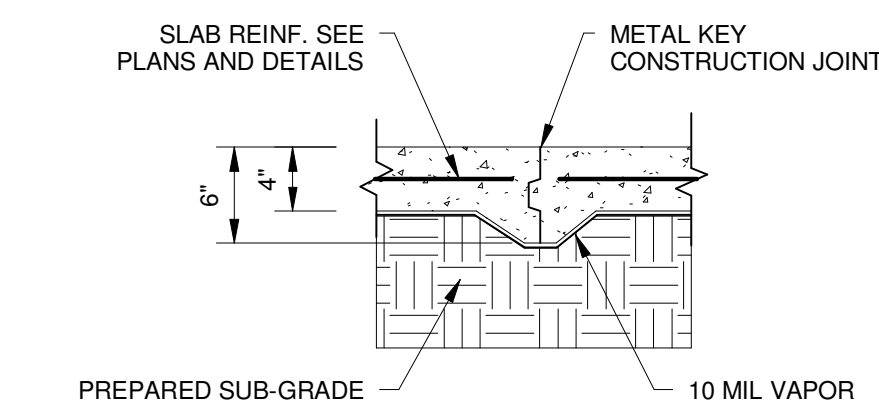
B SECTION - 36" WIDE FOOTING
3/4" = 1'-0"



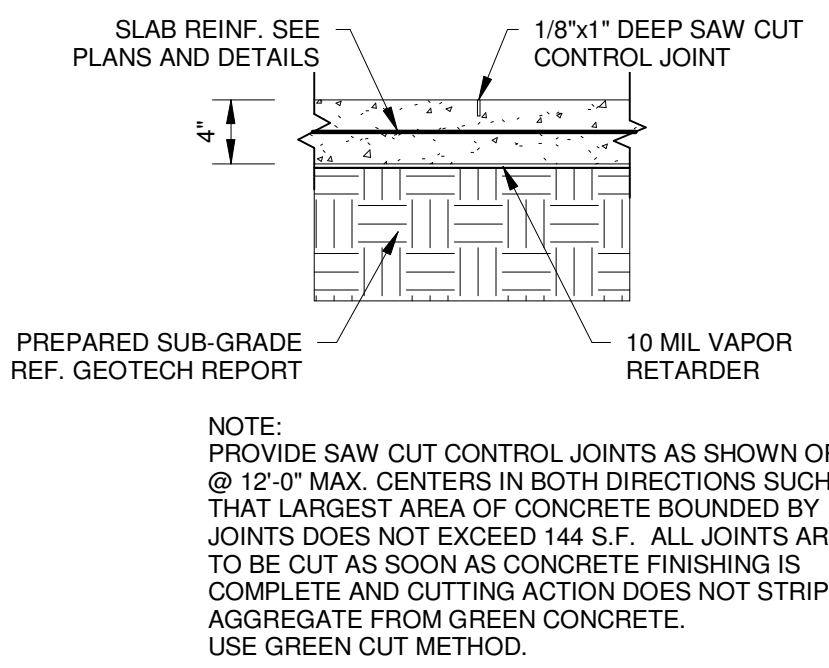
C TYP. INT. STRUCTURAL WALL FOOTING
3/4" = 1'-0"



D SECTION @ SLAB RECESS
3/4" = 1'-0"



E TYP. CONSTRUCTION JOINT
1" = 1'-0"



F TYP. CONTROL JOINT
1" = 1'-0"



PINDER-MARTIN
ASSOCIATES, INC.
1001 N. 12th AVENUE
PENSACOLA, FL 32501
850-439-9110

AA26000896

PROJECT:
5 CLASSROOM ADDITION

LOCATION:
WEST NAVARRE INTERMEDIATE
SCHOOL
1970 COTTON BAY LANE
NAVARRE, FL 32566

CONSULTANTS:

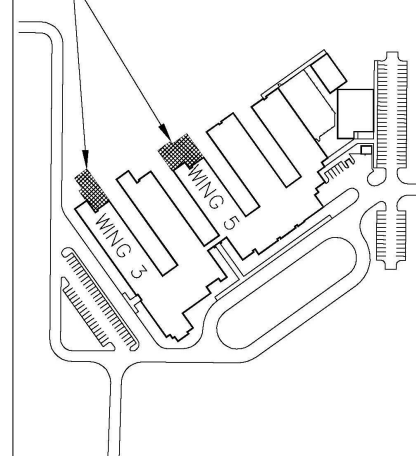
JEHLE-HALSTEAD, INC.
49 EAST THREE STREET
PENSACOLA, FL 32502

CRAFT & WEBSTER
STRUCTURAL ENGINEERS, INC.
129 HIGHPOINT DRIVE
GULF BREEZE, FL 32561

GULF BREEZE CONSULTING, INC.
135 EAST CONVENT ROAD, SUITE 300
PENSACOLA, FL 32502

ADAMS CONSULTING
ENGINEERING, INC.
8 WEST GARRISON STREET - SUITE 382
PENSACOLA, FL 32502

NEW CLASSROOM ADDITIONS



WEST NAVARRE
INTERMEDIATE

No.	Revision/Issue	Date

DRAWN BY: SHW
CHECKED BY: SHW
PROJECT #: 11-046
REVIEW: 09-06-11
PERMITTING: 09-09-11
RELEASE FOR BIDDING: 09-19-11

**SLAB AND
FOUNDATION
PLANS
WING 3 & 5**

S1.1